

Amenities

Living Area

- One and Two Bedroom Apartments
- Two bedrooms with one or one and one half baths
- Private patio or balcony
- Kitchen with full size oven/stove, refrigerator and dishwasher
- Central heating and air conditioning
- Cable television available
- Private exterior storage
- Washer/dryer hookups

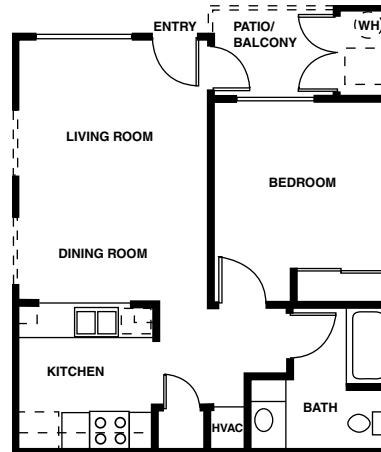
Community

- Preserved oak trees throughout Woodcreek Terrace
- Swimming pool
- Lush garden landscaping
- Spacious club house with social room and game room
- Social activities
- Van service
- On-site laundry facilities
- On-site management

Floor Plans

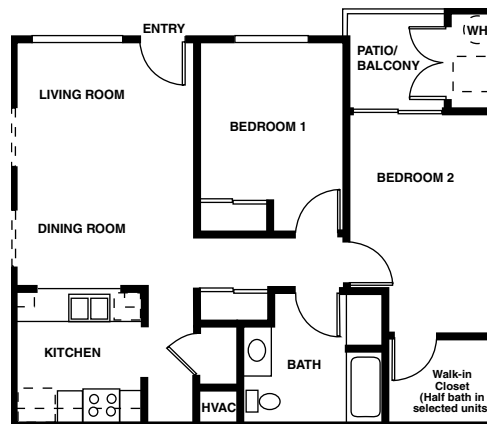
One Bedroom

671 square feet

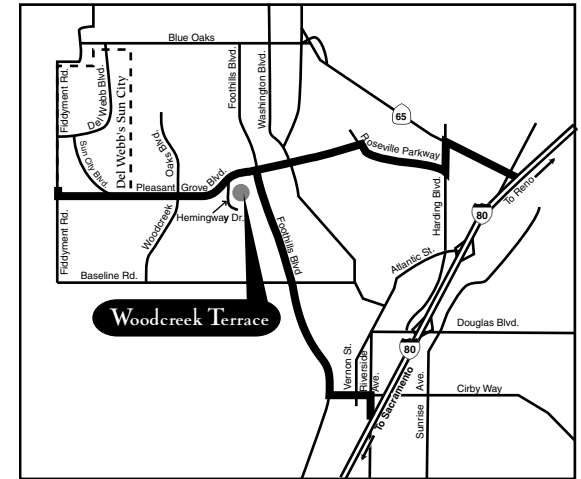


Two Bedroom

912 square feet



Join us at Woodcreek Terrace



From Sacramento / West of Roseville

- I-80 east, exit Riverside Ave.
- Travel north on Riverside Ave. to Cirby Way
- Turn Left on Cirby Way, travel east one mile to Foothills Blvd.
- Turn right on Foothills Blvd., travel three miles to Pleasant Grove Blvd.
- Turn left on Pleasant Grove Blvd., travel a short block to Hemingway Drive.
- Turn left on Hemingway Drive to Woodcreek Terrace entrance.

From East of Roseville

- I-80 west, exit Highway 65
- Follow Harding Ave. exit, travel a half mile south to Roseville Parkway.
- Turn right on Roseville Parkway, travel a half mile west to Pleasant Grove Blvd.
- Turn left on Pleasant Grove Blvd., travel to Hemingway Drive. Turn left on Hemingway Drive to Woodcreek Terrace entrance.



Welcome to Woodcreek Terrace

Woodcreek Terrace offers independent seniors the choice of rental living in the widely acclaimed Woodcreek Oaks master community of Northwest Roseville.

Minutes from the conveniences of downtown Roseville and the new area mall, Roseville Galleria.

Woodcreek Terrace offers a sense of peaceful serenity within a community shaded with heritage oaks and on the banks of Pleasant Grove Creek.

Residents will not have to leave Woodcreek Terrace's grounds to enjoy a refreshing swim or to participate in social activities in the spacious clubhouse.

There will always be plenty to keep you active if you choose; or you may wish to just sit, relax and enjoy the lovely setting of Woodcreek Terrace.



*1295 Hemingway Drive
Roseville, CA 95747
(916) 773-9078*



*1295 Hemingway Drive
Roseville, CA 95747
(916) 773-9078*



EQUAL HOUSING
OPPORTUNITY